



**NSW Mental Health and Drug and Alcohol State  
Update Meeting**

**Monday 10<sup>th</sup> October 2011**

**Craig Hodges – Clinical Governance Project Manager**

## OVERVIEW OF PROJECT

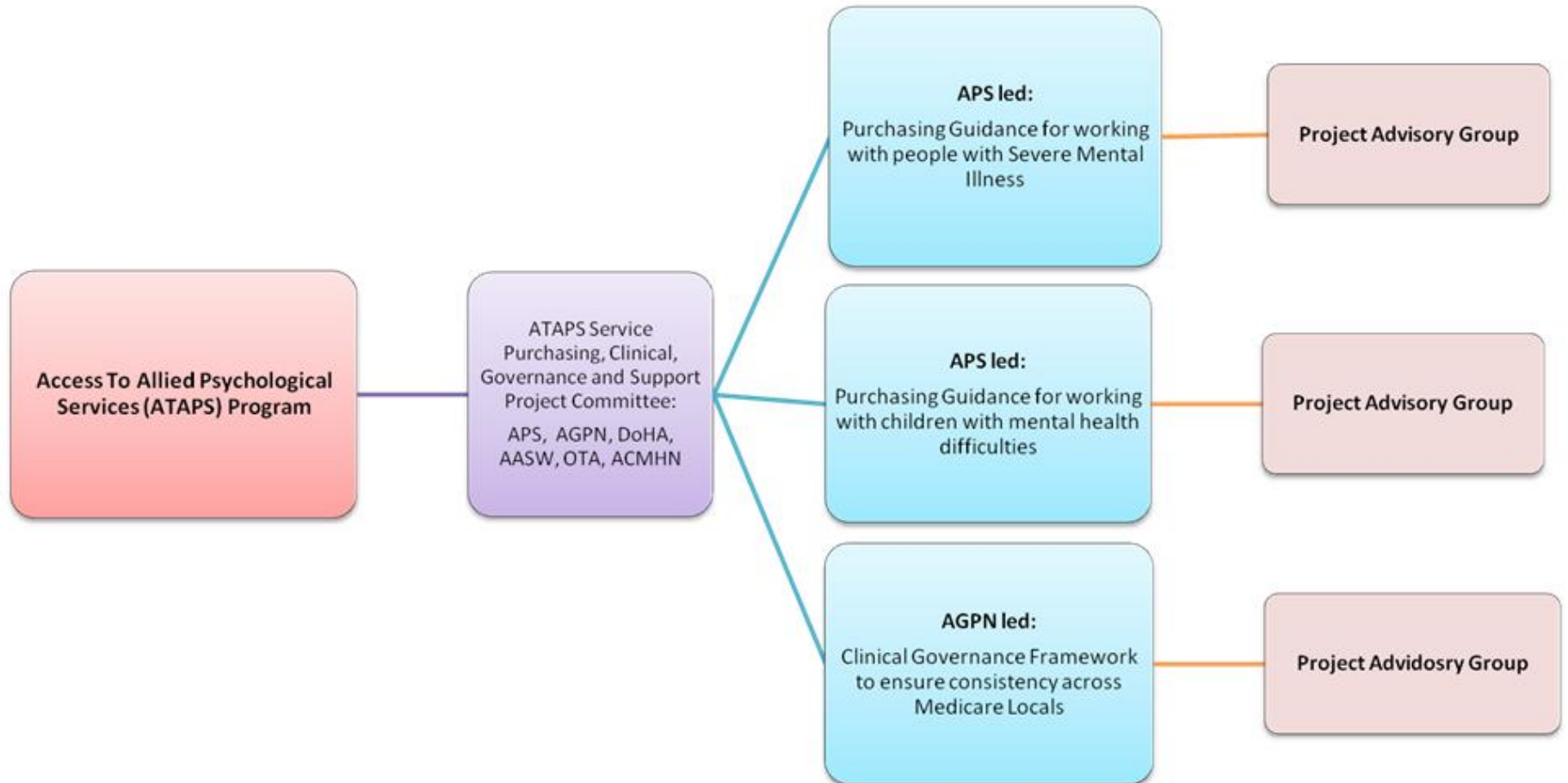
AGPN and APS joint initiative funded by Department of Health and Ageing for a 12 month project.

### Key deliverables:

- Development of draft purchasing guidelines for Medicare Locals on clinical interventions for serious mental illness (APS led)
- Development of draft purchasing guidelines for child mental health services (APS led)
- Clinical Governance Framework for Medicare Locals (AGPN led)
- Business model for providing clinical support (APS led)

**ATAPS SERVICE PURCHASING, CLINICAL GOVERNANCE AND SUPPORT PROJECT**

Joint project between the APS and the AGPN



# PROJECT GOVERNANCE

## **Overarching Project Advisory Committee**

- Membership includes network representation, APS, AASW, OT Australia, College of Mental Health Nurses, DoHA, Consumers

## **Working groups**

- Clinical interventions for serious mental illness
- Child Mental Health Services
- Clinical Governance

# CLINICAL GOVERNANCE PROJECT

Develop a nationally consistent framework to guide development of local clinical governance arrangements for ATAPS that dovetails with Medicare Local Clinical Governance

## Areas for consideration:

- risk management
- feedback mechanisms
- consumer participation
- stakeholder engagement
- good quality clinical record keeping
- clinical support
- continuing professional development
- performance management and accountability of allied health providers



## **CLINICAL GOVERNANCE PROJECT**

Develop resources and supporting materials for implementation of local governance arrangements

Provide ongoing support to GPNs and Medicare Locals to implement their clinical governance arrangements



# CLINICAL GOVERNANCE PROJECT

- **Workforce mapping exercise**
- **Environmental scan**
- **Current clinical governance models**
- **Development of a draft framework**
- **Consultation process**
- **Redrafting of the framework**
- **Finalising framework**
- **Development of resources, tools**
- **Development of operational models at the local level**
- **Implementation support**

# Workforce Mapping

- Map current ATAPS workforce
- Identify gaps
- Scope linkages and partnerships currently available

## Activities:

- Request for ATAPS workforce data from report
- Brief survey to all GPNs re. service gaps, partnerships and linkages

# Clinical Governance Guidelines

- Review existing clinical governance arrangements in place within GPNs
- Link with Medicare Locals and new clinical governance arrangements to be established
- Review other clinical governance frameworks in place for mental health i.e. Headspace, S.A. Shared Mental Health Care

# Workforce Mapping - Questions

- What are some of the immediate gaps identifiable with regards to the ATAPS workforce?
- What linkages have been established with other services/providers as a result of the ATAPS program?
- What partnerships have been established as a result of the ATAPS program?
- What areas require further work/development with regards to partnerships and linkages locally?

# Clinical Governance - Questions

- Can you identify good clinical governance frameworks that have been developed which can be built upon?
- What are some of the critical areas which should be encompassed by the CG framework?
- What strategies will be required to support the implementation of the framework locally?



Contact:

Craig Hodges  
Project Manager Clinical Governance - AGPN

**Email:** [chodges@agpn.com.au](mailto:chodges@agpn.com.au)

**Tel:** 0468 939 670

