

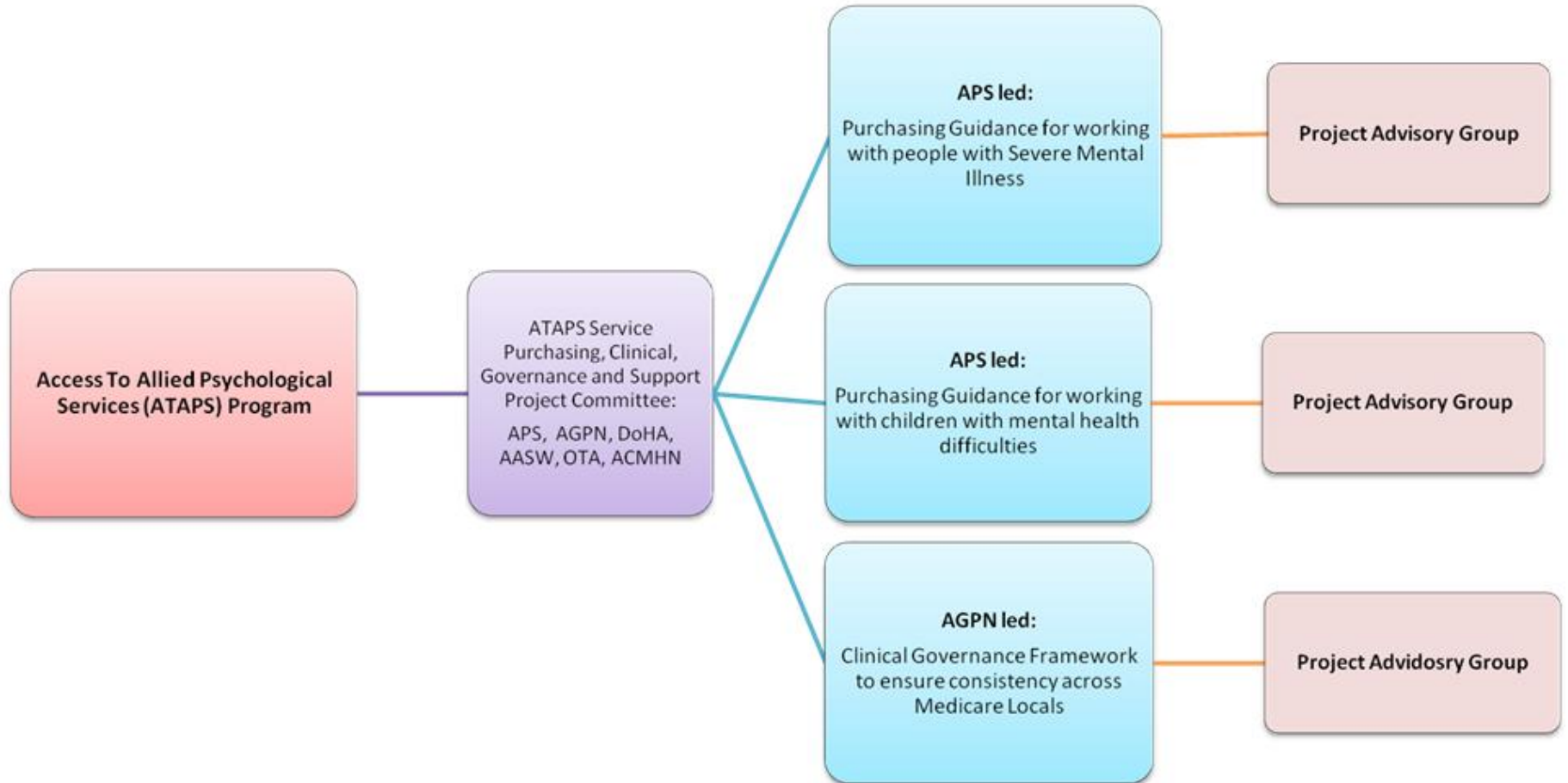
ATAPS Service Purchasing, Clinical Governance and Support Project

Harry Lovelock

Senior Manager Strategic Development and
Public Interest

ATAPS SERVICE PURCHASING, CLINICAL GOVERNANCE AND SUPPORT PROJECT

Joint project between the APS and the AGPN



Project Deliverables

The deliverables which the Department of Health and Ageing has engaged the APS and AGPN to deliver to support the implementation of an expanded ATAPS program include:

- a) Draft purchasing guidance for Medicare Locals for working with people with severe mental illness (APS led)
- b) Draft purchasing guidance for working with children with mental health difficulties and their families (APS led)
- c) Draft business model for providing clinical support to ATAPS providers (APS led)
- d) Draft business models for Divisions of General Practice and Medicare Locals for appropriate local clinical governance arrangements (AGPN led)

Purchasing guidances

- The purchasing guidances which will identify:
 - the evidence-based psychological interventions for use with each population group
 - recommendations as to the required skills, qualifications and experience of the ATAPS workforce
 - Clinical support models to support the workforce
- Two project working groups have been established with representatives from APS, AGPN, DoHA, ACMHN, AASW and OTAustralia and the Children's Mental Health Forum to provide oversight and inform the development of the purchasing guidances.

Clinical Support Service

- The purchasing guidance working groups will inform the development of a number of options for the provision of clinical support. The cost implications for each of these will need to be outlined.
- This work will link closely with clinical governance models being generated by AGPN where the working group overseeing the development of this guidance may also provide oversight and inform this project deliverable as well.

Contact people

- Harry Lovelock APS Senior Manager
 - h.lovelock@psychology.org.au or 03 8662 3392
- Mira Mansour Senior Project Officer, Working with people who have severe mental illness
 - m.mansour@psychologyu.org.au or 03 8662 3669
- Bella Saunders, Senior Project Officer, Working with children who have mental health issues
 - b.saunders@psychology.org.au 03 03 8662 3656